

# Planning Requirements

*Ozone Attainment Demonstration  
Plan Workshop*

*January 6-7, 2004*

**Don Hunsaker**

**Supervising Air Quality Planner**



# Background

- **EPA has classified the San Joaquin Valley Air Basin as *severe* nonattainment for the federal 1-hr ozone standard**
- **This classification requires attainment of the federal 1-hr ozone standard by November 15, 2005**
- **EPA required a demonstration showing how will reach attainment by November 2005**

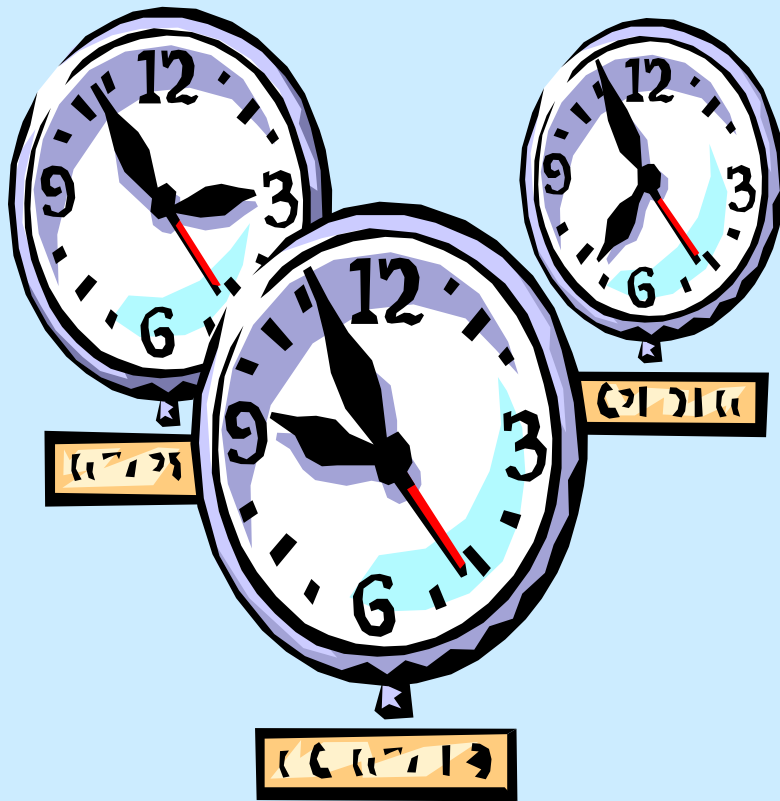


## Background (cont.)

- **Large EPA/ARB heavy-duty and off-road mobile emissions reductions are not scheduled to go into effect until after November 2005**
- **Without these reductions the District had no possibility of preparing the 2005 attainment demonstration required by EPA**



# Severe Plan Federal Clocks



- **March 2004—  
offset sanctions  
begin**
- **September 2004—  
highway funding  
sanctions begin**
- **September 2004—  
FIP promulgated**



# Requesting *extreme* status

- **On December 18, 2003 the District Governing Board voted unanimously to request extreme classification from EPA**
- **If approved:**
  - **Ends requirements for *severe* sanctions and FIP**
  - **Allows time for state & federal emission controls because attainment date is 2010**
  - **Maintains local control of process**
  - **Gives new requirements/schedule**



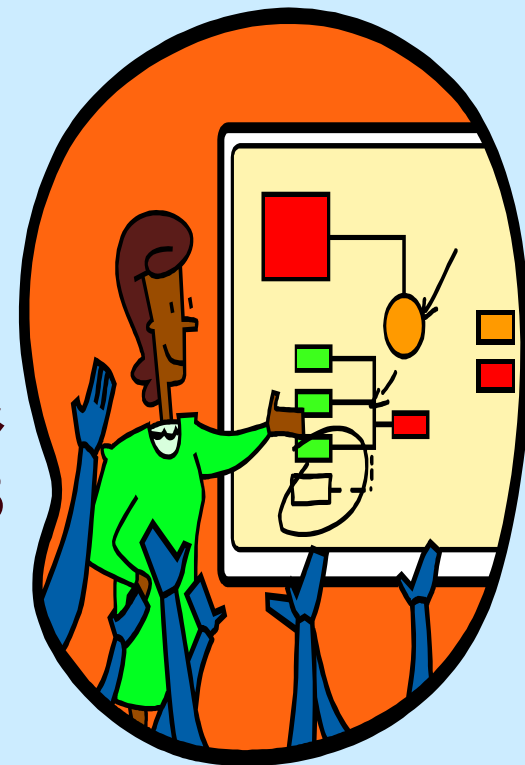
# Developing *Extreme* Plan

- Preparation of *extreme* plan began in 2002 at Governing Board's direction
- Emissions inventory & control measure components developed first for *ROP Plan*
- Modeling w/ CCOS data ongoing since ~2001



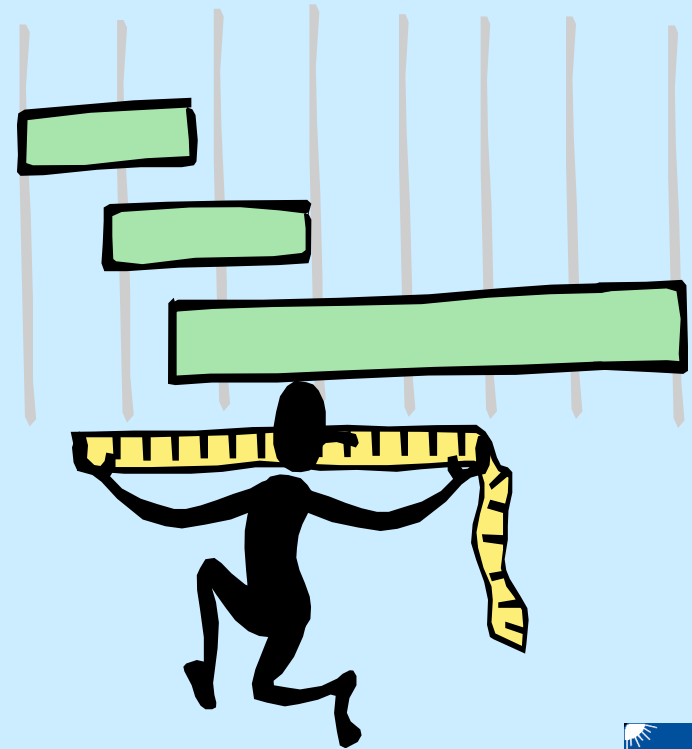
# Plan development activities

- Began w/ *Rate of Progress Plan*
- Eight workshops held 2001/2002
- Governing Board discussions: May, June & December 2002; Feb 2003
- First workshop on *Extreme Plan* held July 2003 (technical issues)



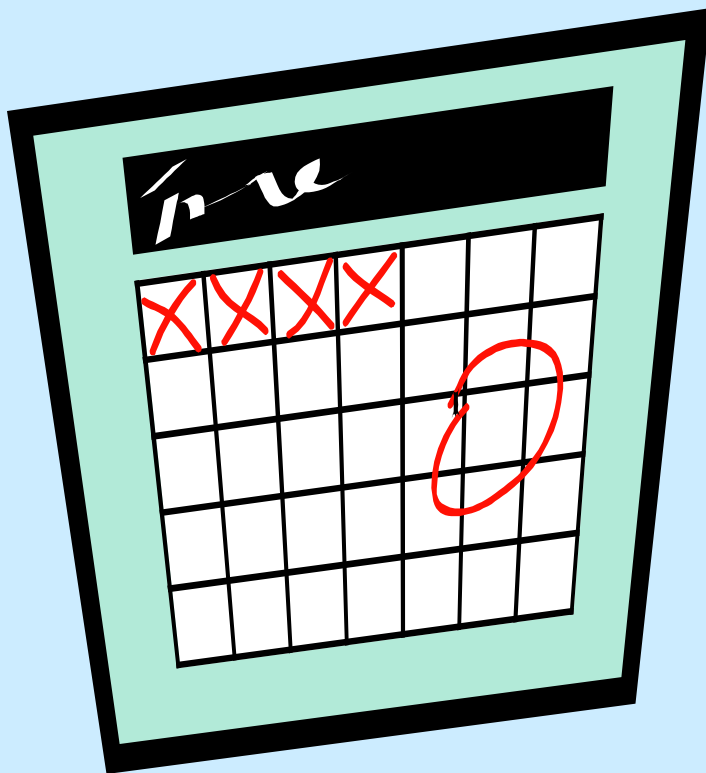
# Why isn't Extreme Plan ready today?

- Stakeholders & District/ARB/EPA want plan based on best science (CCOS)
- Processing/analyzing large CCOS data sets takes time
- New computer models evaluated & selected—time consuming process
- Modeling on critical path for rest of plan





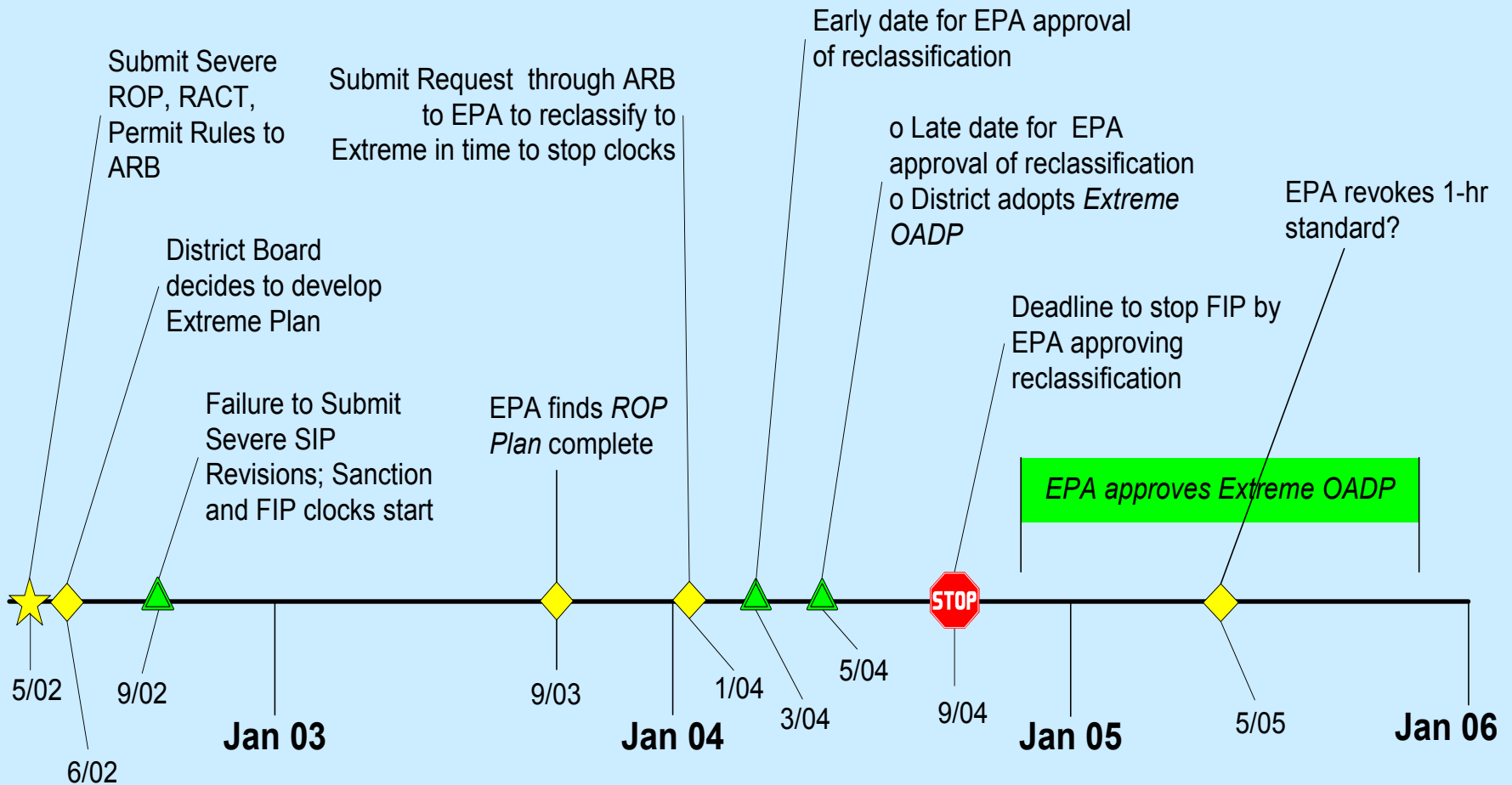
# When is Extreme Plan Due?



- EPA action on request for extreme classification expected to specify due date for plan
- District's intent is to get plan to EPA in summer 2004



# San Joaquin Valley Extreme Schedule



# No delays in controls or plan

- District is continuing to implement control measures from *2002/2005 Ozone ROP Plan* and *2003 PM10 Plan*
- *Extreme Plan* under development extends detailed rule calendar beyond *2002/2005 ROP Plan*
- *Extreme Plan* expected to be submitted before any EPA-designated due date



# Next steps

- Continue working on *Extreme OADP* for May 2004 adoption
  - Complete modeling
  - Identify controls for 2010 attainment
- Continue working on control measure development and implementation
- Next workshop Mar 2004 or @ Draft Plan

