

# San Joaquin Valleywide Air Pollution STUDY AGENCY

Funding air quality research in Central California

**Tony Barba**  
Chair  
Supervisor, Kings County

**Hub Walsh**  
Vice Chair  
Supervisor, Merced County

**Judith G. Case**  
Supervisor, Fresno County

**David Couch**  
Supervisor, Kern County

**Bob Elliott**  
Supervisor, San Joaquin County

**William O'Brien**  
Supervisor, Stanislaus County

**Tom Wheeler**  
Supervisor, Madera County

**J. Steven Worthley**  
Supervisor, Tulare County

Administrative services  
provided by:  
**San Joaquin Valley Air  
Pollution Control District**  
1990 E. Gettysburg Avenue  
Fresno, CA 93726  
(559) 230-6000  
Fax (559) 230-6061  
www.valleyair.org

*Legal: Catherine T. Redmond  
Financial: Cindi Hamm, C.P.A.*

## San Joaquin Valleywide Air Pollution Study Agency

### GOVERNING BOARD MEETING

Central Region Office, Governing Board Room  
1990 E. Gettysburg Avenue, Fresno, CA.

#### AGENDA

**Thursday, June 20, 2013**

**9:00 a.m.**

Meeting held via video teleconference (VTC) system with the Central Region Office (Fresno), the Northern Region Office (Modesto) and the Southern Region Office (Bakersfield). Governing Board meetings are webcast.

---

***All meeting attendees are advised that all pagers, cellular telephones and any other communication devices should be placed in silent mode to prevent interruptions in our Public Meeting proceedings.***

---

Any member of the public may address the Governing Board during both the public comment period and on any scheduled item on the agenda. Comments are limited to a maximum of three minutes per speaker unless, for good cause, the Chair grants a longer period of time.

---

- The San Joaquin Valley Unified Air Pollution Control District Governing Board will meet **AFTER** this meeting.
- Please provide 15 copies of any information intended for use at Governing Board Meetings to the Clerk to the Board prior to the Meeting.
- To request special accommodations for those persons with disabilities please contact the Clerk to the Board at (559) 230-6000 at least 7 days prior to the meeting date.
- The Governing Board relies on the credibility of witnesses and the veracity of testimony on matters brought before this Board for action.
- Please print your name clearly on the Sign-in Sheet at the entrance.

1. CALL TO ORDER
2. ROLL CALL
3. APPROVAL OF CONSENT CALENDAR – Item Numbers 8-9  
*These matters are routine in nature and are usually approved by a single vote. Prior to action by the Governing Board, the public will be given the opportunity to comment on any consent item.*
4. [ADOPT THE STUDY AGENCY'S 2013-14 RECOMMENDED BUDGET](#)
5. PUBLIC COMMENT – *This time is made available for comments from the public on matters within the Board's jurisdiction that are not on the Agenda. It is requested that no comments be made during this period on items on the Agenda. The public may make comments on each Board Agenda Item during the time allowed for public comment. Attention is called to the fact that the Board is prohibited by law from taking action on matters discussed that are not on the Agenda.*
6. GOVERNING BOARD MEMBER COMMENTS
7. OTHER BUSINESS

ADJOURN

CONSENT CALENDAR: ITEM NUMBERS (8 –9)

8. APPROVE ACTION SUMMARY MINUTES FOR THE SAN JOAQUIN VALLEYWIDE AIR POLLUTION STUDY AGENCY GOVERNING BOARD MEETING OF THURSDAY, APRIL 18, 2013
9. RECEIVE AND FILE FINANCIAL REPORTS FOR THE PERIOD ENDING MAY 31, 2013

# San Joaquin Valleywide Air Pollution STUDY AGENCY

Funding air quality research in Central California

**Tony Barba**  
Chair

Supervisor, Kings County

DATE: June 20, 2013

**Hub Walsh**  
Vice Chair

Supervisor, Merced County

TO: SJVAPSA Governing Board

**Judith G. Case**

Supervisor, Fresno County

FROM: Seyed Sadredin, Executive Director/APCO,  
SJVUAPCD  
Project Coordinators: Samir Sheikh, Cindi Hamm

**David Couch**

Supervisor, Kern County

RE: **ADOPT THE STUDY AGENCY'S 2013-14  
RECOMMENDED BUDGET**

**Bob Elliott**

Supervisor, San Joaquin County

**William O'Brien**

Supervisor, Stanislaus County

## **RECOMMENDATION:**

Approve and authorize the Chair to sign the resolution establishing the Study Agency's 2013-14 Adopted Budget.

**Tom Wheeler**

Supervisor, Madera County

**J. Steven Worthley**

Supervisor, Tulare County

## **BACKGROUND:**

Administrative services  
provided by:

**San Joaquin Valley Air  
Pollution Control District**  
1990 E. Gettysburg Avenue  
Fresno, CA 93726  
(559) 230-6000  
Fax (559) 230-6061  
www.valleyair.org

The San Joaquin Valley Air Pollution Study Agency (Study Agency) was formed in 1986 as a joint powers agency whose charter is to combine public- and private-sector contributions and provide financial management services for ozone and particulate matter (PM) air quality research in the San Joaquin Valley. In recognition of the influence of meteorology and emissions outside the San Joaquin Valley, the geographic scope of research has broadened over time to include all of central California, spanning from the Central Coast to the Mojave Desert, and northward to the Sacramento Valley. The San Joaquin Valley Air Pollution Control District provides financial, legal, and administrative services for the Study Agency.

*Legal: Catherine T. Redmond  
Financial: Cindi Hamm, C.P.A.*

The research campaigns that are underwritten by the Study Agency are planned and directed by the Central California Air Quality Studies (CCAQS) Policy Committee, a partnering advisory group coordinated by the atmospheric sciences staff of the California Air Resources Board (ARB). The membership of the Policy Committee includes state and federal agency staff, staff of several central California air districts, and representatives of industry and agriculture. CCAQS research is

conducted by third-party contractors, who typically are private consultants, academic institutions, or federal agencies with research capabilities.

To fund CCAQS research, the Study Agency receives contributions from federal and state agencies, air districts, cities, counties and private-sector stakeholders. Over \$50 million in contributions and commitments have been received to date by the Study Agency and has been employed in pioneering research into the complex natural and human-caused variables associated with regional air quality issues in central California.

### **DISCUSSION:**

Building on the accomplishments of CCAQS field studies, data analysis, and model development over the last two decades, 2012-2013 Study Agency work was dedicated to continuation of the Policy Committee's approved work plan, including critical synthesis work, in-depth investigations of important contributors to air pollution, emissions inventory enhancements, and preparation for upcoming State Implementation Plans to attain more stringent ambient air quality standards. This 2013-2014 Recommended Budget does not propose any new Study Agency work, but shows projects that are underway as a result of the 2012-2013 Budget and work plan. Many projects have been recently completed, or will be completed during the 2013-2014 fiscal year.

As these projects are finalized, these contracts and their associated encumbrances will be closed. Any remaining funds available from these contracts and accounts could be re-appropriated for new projects. Additions to the Study Agency Work Plan would go through the Policy Committee and the Study Agency Governing Board for approval.

While not required by law, approval of this budget better assures an appropriate level of oversight by the Study Agency as several groundbreaking scientific research campaigns come to completion and final expenditures are made.

### **FISCAL IMPACT:**

Approval of the attached Budget Resolution will establish the Study Agency's 2013-14 Adopted Budget at \$736,659. Of this amount, \$413,784 is appropriated from the PM Study Fund, \$308,735 from the Central California Ozone Study (CCOS) Fund, and \$14,140 from the Agricultural Research Fund. This budget also includes a reserve of \$15,000 in the CCOS Fund and \$20,000 in the PM Study Fund to assure available resources for required future financial statement audit and federal Single Audit contract services.

*Attachments:*

*Attachment A: 2013-14 Budget Resolution (2 pages)*

*Attachment B: 2013-14 Recommended Budget (18 pages)*

San Joaquin Valleywide Air Pollution Study Agency  
Meeting of the Governing Board  
June 20, 2013

**ADOPT THE STUDY AGENCY'S 2013-14 RECOMMENDED BUDGET**

**Attachment A:**

**2013-14 Budget Resolution**  
(2 pages)



1 Approved as to Accounting Form

2 By \_\_\_\_\_

3 Cindi Hamm, CPA  
4 Director of Administrative Services

5  
6 **THE FOREGOING** was passed and adopted by the following vote of the  
7 Governing Board of the SAN JOAQUIN VALLEYWIDE AIR POLLUTION STUDY  
8 AGENCY this 20<sup>th</sup> day of June 2013, to wit:

9 AYES:

11 NOES:

13 ABSENT:

16 SAN JOAQUIN VALLEYWIDE  
17 AIR POLLUTION STUDY AGENCY

18 By \_\_\_\_\_  
19 Tony Barba, Chair  
20 Governing Board

21 ATTEST:  
22 Clerk to the Governing Board

23 By \_\_\_\_\_



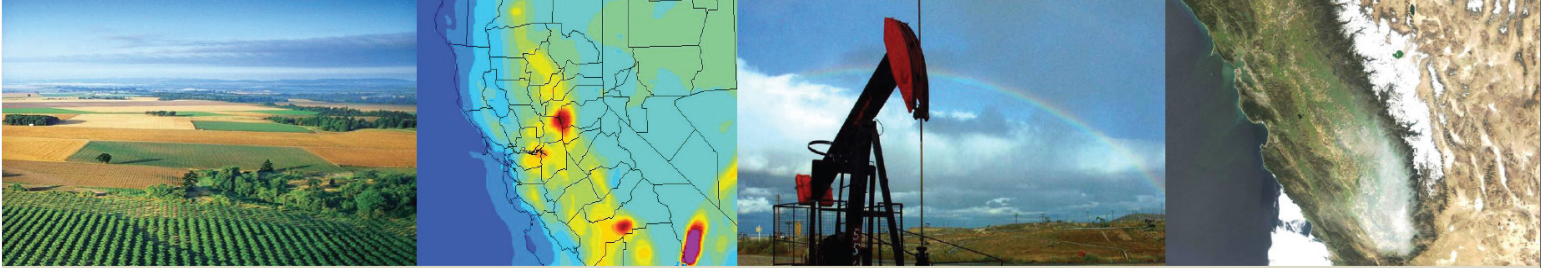
San Joaquin Valleywide Air Pollution Study Agency  
Meeting of the Governing Board  
June 20, 2013

**ADOPT THE STUDY AGENCY'S 2013-14 RECOMMENDED BUDGET**

**Attachment B:**

**2013-14 Recommended Budget**  
(18 pages)

**San Joaquin Valleywide Air Pollution  
STUDY AGENCY**



**RECOMMENDED  
BUDGET  
2013-2014**

Prepared By:

San Joaquin Valley Unified Air Pollution Control District

# San Joaquin Valleywide Air Pollution STUDY AGENCY

Funding air quality research in Central California

## GOVERNING BOARD

**Tony Barba, Chair**  
Supervisor, Kings County

**Hub Walsh, Vice Chair**  
Supervisor, Merced County

**Judith G. Case**  
Supervisor, Fresno County

**David Couch**  
Supervisor, Kern County

**Bob Elliott**  
Supervisor, San Joaquin County

**William O'Brien**  
Supervisor, Stanislaus County

**Tom Wheeler**  
Supervisor, Madera County

**J. Steven Worthley**  
Supervisor, Tulare County

# San Joaquin Valleywide Air Pollution STUDY AGENCY

Funding air quality research in Central California

## RECOMMENDED BUDGET 2013-14

### TABLE OF CONTENTS

ABOUT THE STUDY AGENCY .....	1
Organization of the Study Agency.....	1
Accomplishments.....	3
Historical Funding .....	5
Fiscal Year 2013-14 Workload.....	6
BUDGET FINANCIAL SUMMARY .....	7
DETAIL OF APPROPRIATIONS.....	8
Encumbered Contracts (Current Technical Projects).....	8
New Appropriations (New Technical Projects) .....	9
Other Appropriations.....	10

# San Joaquin Valleywide Air Pollution STUDY AGENCY

Funding air quality research in Central California

**Tony Barba**  
Chair  
Supervisor, Kings County

**Hub Walsh**  
Vice Chair  
Supervisor, Merced County

**Judith G. Case**  
Supervisor, Fresno County

**David Couch**  
Supervisor, Kern County

**Bob Elliott**  
Supervisor, San Joaquin  
County

**William O'Brien**  
Supervisor, Stanislaus County

**Tom Wheeler**  
Supervisor, Madera County

**J. Steven Worthley**  
Supervisor, Tulare County

Administrative services  
provided by:  
**San Joaquin Valley Air  
Pollution Control District**  
1990 E. Gettysburg Avenue  
Fresno, CA 93726  
(559) 230-6000  
Fax (559) 230-6061  
[www.valleyair.org](http://www.valleyair.org)

*Legal: Catherine T. Redmond*  
*Financial: Cindi Hamm, C.P.A.*

June 20, 2013

Governing Board  
San Joaquin Valleywide Air Pollution Study Agency  
1990 E Gettysburg Ave  
Fresno, CA 93726

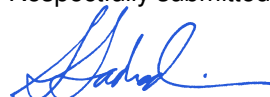
Dear Board Members,

Attached is the Recommended Budget for the San Joaquin Valleywide Air Pollution Study Agency (Study Agency) for July 2013 through June 2014. The Recommended Budget was prepared by the staff of the San Joaquin Valley Air Pollution Control District, and reflects the current status of the scientific and technical research work plan developed by the Central California Air Quality Studies (CCAQS) Policy Committee. The Budget demonstrates adequate resources to support the work of CCAQS during the next fiscal year. Almost all of the appropriations in this budget are scientific and technical projects to be carried out by third-party contractors.

Building on the accomplishments of CCAQS field studies, data analysis, and model development over the last two decades, the 2012-2013 fiscal year was dedicated to completion of critical synthesis work, in-depth investigations of important contributors to air pollution, enhancements to emissions inventory, and preparation for upcoming State Implementation Plans to attain more health-protective and rigorous ambient air quality standards. This 2013-2014 Budget reflects the closure of many of these studies and the continuation of others. While not required by law, approval of this Budget better assures an appropriate level of oversight by the Study Agency as several groundbreaking scientific research campaigns come to completion and final expenditures are made.

I would like to take this opportunity to acknowledge the efforts of the California Air Resources Board for the successful planning and management of the pioneering air quality scientific studies conducted in Central California. I would also like to acknowledge the thorough legal, financial, and administrative efforts of the San Joaquin Valley Air Pollution Control District. Lastly, I would especially like to thank the private sector stakeholders who have contributed financially to the studies and urged elected representatives and federal agencies to support the critical work of the Study Agency. I look forward to continuing the Study Agency's successful public-private partnership and commitment to the understanding of air pollution in Central California.

Respectfully submitted,



Seyed Sadredin  
Executive Director/Air Pollution Control Officer  
San Joaquin Valley Unified Air Pollution Control District

**ABOUT THE STUDY AGENCY**

## **ABOUT THE STUDY AGENCY**

The San Joaquin Valleywide Air Pollution Study Agency (Study Agency) has its origins in the mid-1980s when San Joaquin Valley elected officials first met with state and local air pollution control officials and industry representatives to develop a cooperative research effort that would provide an unbiased assessment of air quality to guide regulatory decisions. The result of these meetings was the establishment of a research collaborative under the mutual guidance of government agencies and private sector stakeholders, for the purpose of designing, funding, planning and directing scientifically sound air quality studies on ozone and other air pollutants. The primary objectives of the studies were to (1) improve the understanding of the contributing factors and conditions that result in poor air quality in the San Joaquin Valley, and (2) develop technical tools that enable decision-makers to formulate equitable and effective regional emission control plans to meet state and federal ambient air quality standards.

### **Organization of the Study Agency**

One of the original objectives for the Study Agency was to use both public- and private-sector funds in carrying out its work, which required that the Study Agency be established as a joint powers agency (JPA) under state law. The Study Agency was formed in 1986 with member counties, Fresno, Kern, Kings, Madera, Merced, San Joaquin, Stanislaus, and Tulare. Mariposa County joined the Study Agency in 1989 and withdrew in 2007. Under joint powers law, the Study Agency is distinct from the counties and the San Joaquin Valley Unified Air Pollution Control District (SJVUAPCD). The Governing Board of the Study Agency consists of one supervisor appointed by the Board of Supervisors of each member county. The supervisors are also on the Governing Board of the SJVUAPCD. Study Agency meetings are usually held immediately prior to the SJVUAPCD Governing Board meeting. As the Study Agency employs no staff, the SJVUAPCD provides legal counsel, accounting, administrative support, and project management for the Study Agency as an in-kind contribution. Since 1993, the Executive Director/Air Pollution Control Officer of the SJVUAPCD has been designated as the Auditor-Controller of the Study Agency.

Consistent with the original vision of the Study Agency Governing Board, the air quality research funded by the Study Agency is planned and directed by a Policy Committee that is coordinated by the scientific and technical staff of the California Air Resources Board (ARB). The Policy Committee (PC) consists of private sector stakeholders, representatives of central California air districts, and state and federal agency staff; the Chair of the PC is appointed by ARB. ARB thus provides significant policy-level guidance for the work funded by the Study Agency.

Preliminary studies revealed that regional influences affecting the movement of air, precursors, and air pollutants between air basins required expansion of the area of study beyond the boundaries of the San Joaquin Valley to a larger geographic area. The expansion of the study area to include adjacent air basins resulted in the cooperative participation in the PC by central California air districts including the Bay

Area Air Quality Management District (BAAQMD), Sacramento Metropolitan Air Quality Management District (SMAQMD), Monterey Bay Air Pollution Control District and San Luis Obispo County Air Pollution Control District.

Since inception, the major research campaigns funded by the Study Agency have been known by several names, including the San Joaquin Valley Air Quality Study (SJVAQS), California Regional Particulate Air Quality Study (CRPAQS), and Central California Ozone Study (CCOS). Over time, the general label, "Central California Air Quality Studies" (CCAQS) has arisen to refer to all ozone and particulate matter research underwritten by the Study Agency.

The Study Agency relies on the PC (also known as the CCAQS PC) for the overall design and oversight of the CCAQS research programs. The PC establishes the priorities and scope of research campaigns, helps identify funding, and identifies the individual projects needed within each campaign. CCAQS projects are carried out by third-party contractors, who typically are private-sector consultants, academic researchers, or federal agencies with research capacity. The PC authorizes the release of Requests for Proposals, approves contractor selection, and forwards the contractor and budget recommendations to the Study Agency Governing Board.

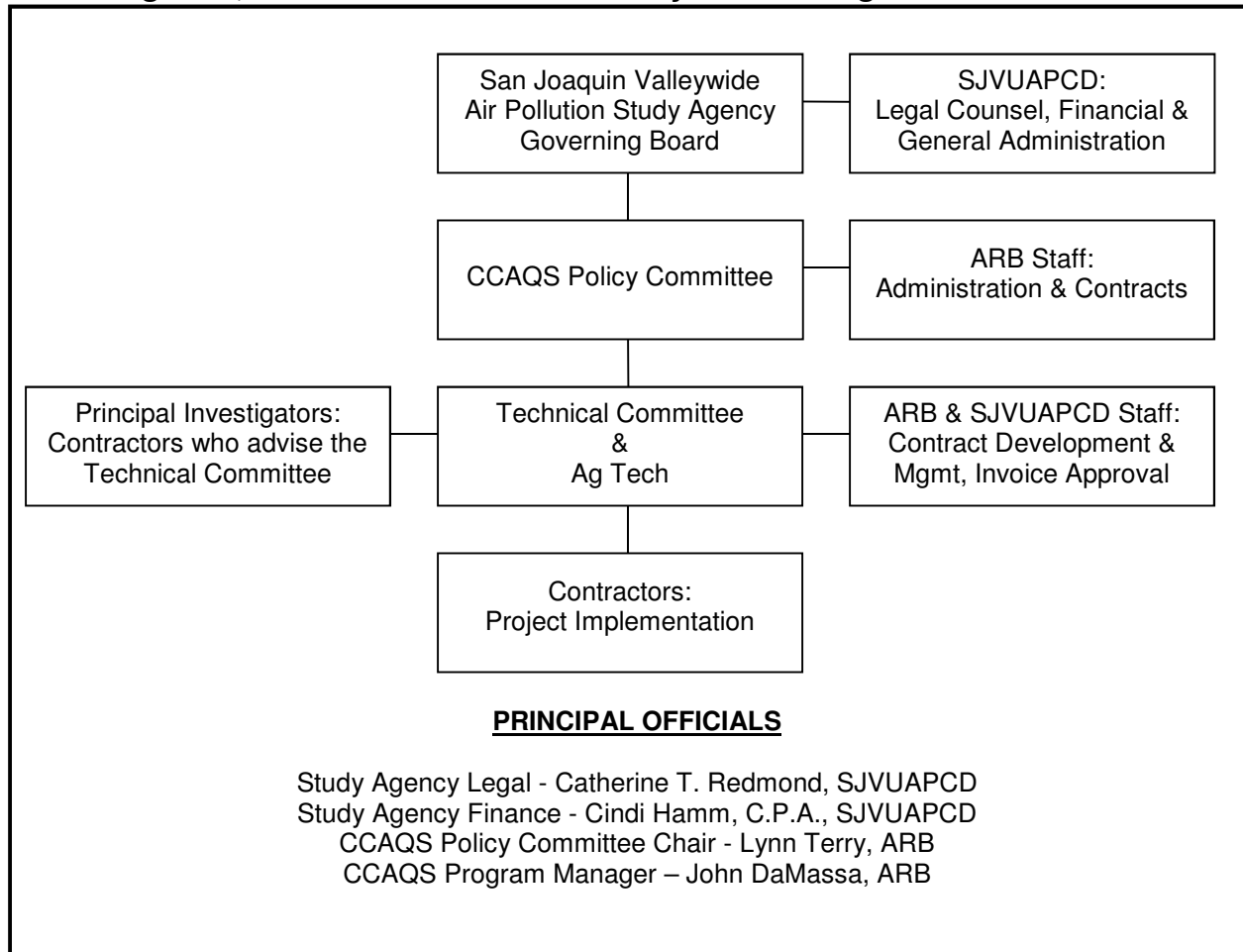
Federal agencies also participate on the PC. The United States Environmental Protection Agency (EPA) became a participant because the purpose of the studies included developing tools that would assist in designing control strategies for inclusion in the State Implementation Plan (SIP) to meet federal air quality standards. The Department of Defense and the Department of Agriculture are also active participants and funding providers.

The PC established a Technical Committee (TC) to design and supervise the research projects. The TC is composed of ARB and air district staff, technical representatives provided by PC participants, principal investigators and other scientific advisors. ARB chairs the TC and provides day-to-day program management including project invoice approvals. The TC considers research needs, develops technical outlines of appropriate studies, revises work programs to comply with PC directives, prepares Requests for Proposals for release, reviews submittals, recommends selection of contractors and coordinates contract preparation. The TC Chair provides technical oversight for projects and reports on progress to the Policy Committee.

With an advisory capacity similar to the TC, the Agricultural Technical Advisory Committee (Ag Tech) provides a forum for the planning and review of agricultural air quality research. Ag Tech is coordinated by SJVUAPCD staff and includes representatives of SJVUAPCD, ARB, US Department of Agriculture (USDA) Natural Resources Conservation Service, US EPA, California Cotton Ginners and Growers Associations, Nisei Farmers League, Almond Hullers and Processors Association, California Dairy Campaign, Western United Dairymen, Dairy CARES, and farm bureaus. Ag Tech has advisory responsibility for projects conducted with resources from the Study Agency's Agricultural Research fund.



**Figure 1, Central California Air Quality Studies Organizational Chart**



## Accomplishments

Research commissioned by the Study Agency has provided information and tools that are critical for attainment planning efforts and has improved ongoing programs including the daily forecasting of air quality and smoke management. The information and tools developed through CCAQS have been employed by the San Joaquin Valley, Bay Area, and Sacramento air districts for their ozone and particulate matter attainment plans.

The San Joaquin Valley Air Quality Study (SJVAQS) in 1990 was the first major field study conducted by the Study Agency. This study included preparatory technical studies, a major field program, data analysis and modeling. Similar to other regional air pollution field studies, during the SJVAQS field program researchers more than doubled the density of the existing monitoring network, and used state-of-the-art equipment to take measurements at almost 400 pollution and weather monitoring sites in central California. During high-pollution episodes, routine monitoring was augmented by aircraft flights and weather balloon releases from 25 sites. SJVAQS was coordinated

with a simultaneous study called AUSPEX (Atmospheric Utility Signatures, Predictions, and Experiments) that was funded by utility and energy groups. The Study Agency then established a project fund called SJVAQS/AUSPEX Regional Modeling Adaptation Project (SARMAP) for the development of a regional air quality model based on the results of SJVAQS and AUSPEX. The supercomputer-based regional air quality model developed through SARMAP was employed for State Implementation Plans (SIPs) in the mid-1990s. In 1996, the PC published a summary of knowledge to-date in "*San Joaquin Valley Air Quality Study Policy-Relevant Findings.*"

Particulate research project development began in 1993. The project was named the California Regional Particulate Air Quality Study (CRPAQS) to reflect that the study region had expanded beyond the San Joaquin Valley. As with the ozone study, initial efforts included technical support studies to plan for a major field effort. CRPAQS also included extensive research funded by direct grants from the USDA to the University of California at Davis to assess particulate emissions related to agriculture. The first major CRPAQS field effort was a 1995 pilot study called the Integrated Monitoring Study (IMS95) to test measurement methods, improve preliminary conceptual models of particulate formation and evaluate regional homogeneity prior to final field study planning.

The CRPAQS main field program began in December of 1999 and extended through February of 2001. CRPAQS data analysis projects are complete. Results from CRPAQS proved valuable for the modeling analysis of controls proposed for the SIPs submitted by SJVUAPCD for compliance with federal particulate standards. Preliminary modeling of IMS95 data was used for the *2003 PM10 Plan* and improved models were used with 2001 data from the main CRPAQS field program in the *2006 PM10 Plan* and in the *2007 PM10 Maintenance Plan and Request for Redesignation*. Advanced modeling of PM2.5 using CRPAQS data was conducted for the *2008 PM2.5 Plan* using a combination of sophisticated receptor and regional models and special speciation calculations per guidance issued by EPA. Further research on advanced particulate modeling methods for PM2.5 is nearing completion.

A second ozone study named the Central California Ozone Study (CCOS) was conducted as a companion effort with the major CRPAQS field study. The CCOS field study was conducted during the summer of 2000 while the CRPAQS field program was in progress, to allow dual use of the added atmospheric measurement sites. Development of a combined data management system shared cost between the two projects. CCOS data analysis and modeling analysis provided valuable information for development of the SJVUAPCD *2004 Extreme Ozone Attainment Demonstration Plan* and the *2007 Ozone Plan* to comply with the federal one-hour and eight-hour ozone air quality standards.

Several projects related to agriculture have been conducted under the auspices of the Study Agency and Ag Tech, with additional financial support for research provided by stakeholders. Agricultural research project results have provided measurement of dairy and poultry volatile organic compound emission rates, which provided a sound scientific

basis for the determination of baseline emissions and Best Available Control Technology determinations to support permit evaluations for large facilities and the development of SJVUAPCD Rule 4570 (Confined Animal Facilities). Current projects include evaluation of emission reductions associated with Conservation Management Practices implemented by agricultural operations to reduce particulate emissions, and the evaluation of emissions from composting operations and dairy silage.

### Historical Funding

The earliest efforts of the Study Agency and its partnering agencies and stakeholders were concentrated on raising funds sufficient to conduct the early field studies, analyze the collected data, and develop models to simulate emissions scenarios. Table 1 shows the contributions to the five research campaigns conducted by the PC and the Study Agency. It should be acknowledged that much of the federal funding shown below was the result of significant personal effort by the San Joaquin Valley's private-sector stakeholders and local elected officials. The figures in Table 1 are approximate, and do not reflect interest earned on deposits, in-kind contributions, or air quality research funds that were not managed by the Study Agency. The ozone studies conducted during the early 1990s are estimated at \$22 million total, with AUSPEX at approximately \$11 million external to Study Agency accounting. To further emphasize the approximations in Table 1, the totals for each sector may not equal the sum of all contributions to each campaign due to fund transfers between campaigns, and some of the funding attributed to the state sector in Table 1 originated as federal appropriation.

**Table 1, Study Agency Contributions and Commitments, by Campaign and Contributing Sector**

	<u>SJVAQS</u>	<u>SARMAP</u>	<u>CRPAQS</u>	<u>CCOS</u>	<u>Ag Research</u>	<u>TOTAL</u>
<b>Private Sector</b>	\$2,535,335	\$1,760,000	\$900,104	\$1,045,038		\$5,805,079
<b>Federal</b>	2,941,000		12,362,550	1,378,000		16,681,550
<b>State &amp; local</b>	3,881,878		5,501,785	9,260,933	73,600	18,160,838
<b>Air Districts</b>	<u>1,152,000</u>	<u>1,230,000</u>	<u>4,632,140</u>	<u>3,725,914</u>	<u>250,000</u>	<u>9,760,054</u>
	<b>\$10,510,212</b>	<b>\$2,990,000</b>	<b>\$23,396,579</b>	<b>\$15,409,885</b>	<b>\$323,600</b>	<b>\$50,407,521</b>

## **Fiscal Year 2013-14 Workload**

Since its establishment, the work funded by the Study Agency has produced the foundational knowledge on the causes and impacts of the serious air pollution problems in Central California. As such, the Study Agency and its participating agencies, researchers, stakeholders have provided invaluable contributions to the effectiveness and efficiency of Central California's attainment strategies, and helped to improve the respiratory health and quality of life of Valley residents while assuring the strength of the regional economy. Study Agency-sponsored projects have utilized 96% of the total contributions to-date. Most of the remaining funds are planned for expenditure over the next one to two years, and will be dedicated to syntheses of numerous prior studies, as well as new field measurements, laboratory research and analysis that will provide insight into issues that were identified more recently.

While major fundraising efforts are not planned for Fiscal Year 2013-14, it is anticipated that the need for additional public and private funding for air quality research in Central California will continue as health-based air quality standards evolve and necessitate new State Implementation Plans and regulations. As established, the Study Agency can serve as the vehicle for coordinated air quality research campaigns in the future.

CCAQS projects that are already encumbered, or which were identified in the 2011-2012 and 2012-2013 Study Agency Work Plans, are described starting on page 8. To preserve the intent and obligation of donors' contributions, funds for CCAQS projects are designated as either in the CCOS Fund for ozone issues, the PM Fund for CRPAQS projects, or the Ag Research Fund.

As projects are finalized, these contracts and their associated encumbrances will be closed. Any remaining funds available from these contracts and accounts could be re-appropriated for new projects. Additions to the Study Agency Work Plan would go through the Policy Committee and the Study Agency Governing Board for approval.

# BUDGET FINANCIAL SUMMARY

### BUDGET FINANCIAL SUMMARY

	PM Study Fund	CCOS Fund	Ag Research Fund	Total
<b>REVENUE/FUNDING SOURCES</b>				
<b>Estimated Fund Balance Available</b>	\$ 393,996	\$ 313,594	\$ 47,596	\$ 755,186
<b>Projected Revenue</b>				
Contributions				
CDFA Agreement #09-0829-2	82,504	-	-	82,504
CDFA for Dairy Silage VOC	-	10,000	-	10,000
Interest	5,000	4,000	700	9,700
<b>Total Revenue</b>	87,504	14,000	700	102,204
<b>TOTAL REVENUE/FUNDING SOURCES</b>	<b>\$ 481,500</b>	<b>\$ 327,594</b>	<b>\$ 48,296</b>	<b>\$ 857,390</b>
<b>APPROPRIATIONS</b>				
<b>Services and Supplies</b>				
Professional and Specialized Services				
Encumbered Contracts	\$ 362,713	\$ 101,049	\$ 14,140	\$ 477,902
New Appropriations	-	90,000	-	90,000
Total Professional and Specialized Services	362,713	191,049	14,140	567,902
Equipment Maintenance	-	38,837	-	38,837
Auditing Services	-	14,664	-	14,664
Insurance	-	5,000	-	5,000
Special Agency Expense	26,071	-	-	26,071
<b>Total Services and Supplies</b>	388,784	249,550	14,140	652,474
<b>Equipment</b>				
Computer Equipment	25,000	58,982	-	83,982
Office Furniture & Equipment	-	203	-	203
<b>Total Equipment</b>	25,000	59,185	-	84,185
<b>TOTAL APPROPRIATIONS</b>	<b>\$ 413,784</b>	<b>\$ 308,735</b>	<b>\$ 14,140</b>	<b>\$ 736,659</b>
<b>Estimated Ending Fund Balance</b>	\$ 67,716	\$ 18,859	\$ 34,156	\$ 120,731
<b>Reserve for Future Audits and Administrative Expenditures</b>	20,000	15,000	-	35,000
<b>Estimated Unreserved Fund Balance</b>	<b>\$ 47,716</b>	<b>\$ 3,859</b>	<b>\$ 34,156</b>	<b>\$ 85,731</b>

## **DETAIL OF APPROPRIATIONS**

**DETAIL OF APPROPRIATIONS  
Encumbered Contracts (Current Technical Projects), Remaining Funds**

<b>ID #</b>	<b>Contractor/ Project Title / Description</b>	<b>PM Study</b>	<b>CCOS</b>	<b>Ag Research</b>	<b>Total</b>
<b>PM 00-05</b>	<b>The regents of UC - Kleeman modeling</b> Advanced Modeling of Airborne Particulate Matter in the San Joaquin Valley	\$ 84,897			\$ 84,897
<b>PM 09-01</b>	<b>US Dept. of Agriculture, Agriculture Research</b> Conduct sampling analyses of PM emissions from seven cotton gin sites.	\$ 8,100			
<b>PM 09-02</b>	<b>The Regents of the University of CA, Los Angeles</b> Application of the WRF meteorological model to winter CRPAQS episodes and improvements to remedy model deficiencies.	\$ 58,383			\$ 58,383
<b>PM 11-01</b>	<b>Texas A&amp;M University</b> Almond Harvesting	\$ 3,718			\$ 3,718
<b>PM 11-02</b>	<b>Winegar Air Sciences (Dr. Eric Winegar)</b> Quantification of PM reductions from various practices on SJV dairies to improve estimations of PM control efficiencies.	\$ 41,463			\$ 41,463
<b>PM 11-22</b>	<b>Science Applications International Corporation</b> Develop improvements to the PM2.5 emission inventory.	\$ 103,403			\$ 103,403
<b>PM 12-01</b>	<b>UC Regents - Lawrence Berkeley National Laboratory</b> Development of a conceptual model for NOx/SOx contributions to PM2.5	\$ 42,749			\$ 42,749
<b>PM 13-01</b>	<b>California State University, Fresno</b> Raisin Harvesting	\$ 20,000			\$ 20,000
<b>CCOS 04-05</b>	<b>Steve Reynolds</b> Research Program Evaluator for CCOS		\$ 10,745		\$ 10,745
<b>CCOS 10-02</b>	<b>Steve Reynolds</b> Integration and Synthesis of CCOS and CRPAQS Study Findings		\$ 52,163		\$ 52,163
<b>CCOS 11-02</b>	<b>Sierra Research</b> Improve the resolution and accuracy of ARB's spatial and temporal allocation of agricultural based emissions.		\$ 38,141		\$ 38,141
<b>AG 07-1</b>	<b>Utah State University Research Foundation</b> Testing to determine emission reductions from Lower Emitting Ag Practices			\$ 14,140	\$ 14,140
	<b>TOTAL ENCUMBERED CONTRACTS:</b>	<b>\$ 362,713</b>	<b>\$ 101,049</b>	<b>\$ 14,140</b>	<b>\$ 477,902</b>



**New Appropriations (New Technical Projects)**

ID #	Project Title / Description	PM Study	Ag		Total
			CCOS	Research	
1	<b>VOC Emission Reductions</b> Assess the VOC emissions resulting from the application of silage management techniques in use at California dairies		\$ 90,000		\$ 90,000
<b>TOTAL NEW APPROPRIATIONS:</b>		\$ -	\$ 90,000	\$ -	\$ 90,000

## Other Appropriations

	PM Study	CCOS	Ag Research	Total
<b>Other Services</b>				
<b>Equipment Maintenance</b>				
- Air Monitoring Equipment Maintenance		\$ 38,837		\$ 38,837
<b>Auditing Services</b>				
- Annual Financial Audit		\$ 7,250		\$ 7,250
- Peer Review		\$ 7,414		\$ 7,414
<b>Insurance</b>		\$ 5,000		\$ 5,000
<b>Special Agency Expense</b>				
- Publications and Symposium	\$ 26,071			\$ 26,071
<b>Equipment</b>				
<b>Computer Equipment</b>				
- Atmospheric Modeling Center (District Coordinated)		\$ 8,982		\$ 8,982
- Regional SIP Modeling Support (ARB Coordinated)	\$ 25,000	\$ 50,000		\$ 75,000
<b>Facilities &amp; Equipment</b>				
- Web cameras at monitoring stations		\$ 203		\$ 203
<b>Reserve</b>				
- Reserve for future audits and administrative expenditures	\$ 20,000	\$ 15,000		\$ 35,000

**Northern Region**

Serving San Joaquin, Stanislaus and Merced counties

4800 Enterprise Way, Modesto, CA 95356-8718

Tel: 209-557-6400 FAX: 209-557-6475

**Central Region (Main Office)**

Serving Madera, Fresno and Kings counties

1990 E. Gettysburg Avenue, Fresno, CA 93726-0244

Tel: 559-230-6000 FAX: 559-230-6061

**Southern Region**

Serving Tulare and Valley air basin portions of Kern counties

34946 Flyover Court, Bakersfield, CA 93308-9725

Tel: 661-392-5500 FAX: 661-392-5585

[www.valleyair.org](http://www.valleyair.org)

# San Joaquin Valleywide Air Pollution STUDY AGENCY

Funding air quality research in Central California

**Tony Barba**  
Chair  
Supervisor, Kings County

DATE: June 20, 2013

**Hub Walsh**  
Vice Chair  
Supervisor, Merced County

TO: SJVAPSA Governing Board

FROM: Michelle Franco, Deputy Clerk of the Boards:

**Judith G. Case**  
Supervisor, Fresno County

RE: **APPROVE ACTION SUMMARY MINUTES FOR THE  
SAN JOAQUIN VALLEYWIDE AIR POLLUTION  
STUDY AGENCY GOVERNING BOARD MEETING  
OF THURSDAY, APRIL 18, 2013**

**David Couch**  
Supervisor, Kern County

**Bob Elliott**  
Supervisor, San Joaquin County

**RECOMMENDATION:**

**William O'Brien**  
Supervisor, Stanislaus County

Approve the attached Action Summary Minutes for the San Joaquin Valleywide Air Pollution Study Agency Governing Board meeting of Thursday, April 18, 2013.

**Tom Wheeler**  
Supervisor, Madera County

**J. Steven Worthley**  
Supervisor, Tulare County

Administrative services  
provided by:  
**San Joaquin Valley Air  
Pollution Control District**  
1990 E. Gettysburg Avenue  
Fresno, CA 93726  
(559) 230-6000  
Fax (559) 230-6061  
www.valleyair.org

*Legal: Catherine T. Redmond  
Financial: Cindi Hamm, C.P.A.*

*Attachments:  
Action Summary Minutes for Thursday, April 18, 2013 (2 pages)*

Action Summary Minutes  
San Joaquin Valleywide Air Pollution Study Agency

**GOVERNING BOARD MEETING**

Central Region Office, Governing Board Room  
1990 E. Gettysburg Avenue, Fresno, CA

**Thursday, April 18, 2013**  
**9:00 a.m.**

*Meeting held via teleconferencing (VTC) with the Central Region Office (Fresno), the Northern Region Office (Modesto) and the Southern Region Office (Bakersfield). This meeting was webcast.*

1. CALL MEETING TO ORDER  
The Chair, Supervisor Tony Barba, called the meeting to order at 9:00 a.m.
2. ROLL CALL was taken and a quorum was present.

*Present:*

Tony Barba, Supervisor, <b>Chair</b>	Kings County
William O'Brien, Supervisor	Stanislaus County
Tom Wheeler, Supervisor	Madera County
Hub Walsh, Supervisor, <b>Vice Chair</b>	Merced County
David Couch, Supervisor	Kern County
Judith Case, Supervisor	Fresno County
Bob Elliott, Supervisor,	San Joaquin County
J. Steven Worthley, Supervisor	Tulare County

3. APPROVAL OF CONSENT CALENDAR - Item numbers 7 - 9 *These matters are routine in nature and are usually approved by a single vote. Prior to action by the Board, the public is given the opportunity to comment on any consent item.*
7. APPROVE ACTION SUMMARY MINUTES FOR THE SAN JOAQUIN VALLEYWIDE AIR POLLUTION STUDY AGENCY GOVERNING BOARD MEETING OF THURSDAY, FEBRUARY 21, 2013
8. RECEIVE AND FILE FINANCIAL REPORTS FOR THE PERIOD ENDING MARCH 31, 2013

9. REVISION TO JUNE 2008 COMMITMENT TO CONTRIBUTE \$20,000 TO A STUDY BY CALIFORNIA STATE UNIVERSITY, FRESNO FOR EVALUATION OF REDUCTIONS ACHIEVED BY LOWER EMITTING AGRIBULTURAL PRACTICES IN RAISIN HARVESTING

Public Comment: None

*Moved:* Wheeler  
*Seconded:* Worthley  
*Ayes:* Case, Couch, Elliott, O'Brien, Walsh, Wheeler, Worthley, Barba  
*Nays:* None

***Motion unanimously carried to approve Items 7 – 9 as recommended.***

4. PUBLIC COMMENT – None
5. GOVERNING BOARD MEMBER COMMENTS – None
6. OTHER BUSINESS – None

Meeting adjourned at 9:03 a.m.

# San Joaquin Valleywide Air Pollution STUDY AGENCY

Funding air quality research in Central California

**Tony Barba**  
Chair  
Supervisor, Kings County

DATE: June 20, 2013

**Hub Walsh**  
Vice Chair  
Supervisor, Merced County

TO: SJVAPSA Governing Board

FROM: Cindi Hamm, Director of Administrative Services 

**Judith G. Case**  
Supervisor, Fresno County

RE: **RECEIVE AND FILE FINANCIAL REPORTS FOR  
THE PERIOD ENDING MAY 31, 2013**

**David Couch**  
Supervisor, Kern County

**RECOMMENDATION:**

**Bob Elliott**  
Supervisor, San Joaquin County

Receive and file financial reports for the period ending  
May 31, 2013.

**William O'Brien**  
Supervisor, Stanislaus County

**Tom Wheeler**  
Supervisor, Madera County

**DISCUSSION:**

**J. Steven Worthley**  
Supervisor, Tulare County

The following reports summarize the financial status of the Study  
Agency funds for the period ending May 31, 2013.

Administrative services  
provided by:  
**San Joaquin Valley Air  
Pollution Control District**  
1990 E. Gettysburg Avenue  
Fresno, CA 93726  
(559) 230-6000  
Fax (559) 230-6061  
www.valleyair.org

*Legal: Catherine T. Redmond  
Financial: Cindi Hamm, C.P.A.*

**Attachments:**

*Attachment A: Financial Reports (12 pages)*

**SAN JOAQUIN VALLEY WIDE AIR POLLUTION STUDY AGENCY  
BUDGET STATUS REPORT - FISCAL YEAR 2012/13**

**PM STUDY FUND**

Month Ending May 31, 2013  
(92% of the Year Completed)

	Adopted	Adjusted	Actuals	Encumbrances	(Over) /Under	% Collected /Used
<b>REVENUE / FUNDING SOURCES</b>						
<b>Fund Balance Available</b>	\$ 597,986	\$ 597,986	\$ 689,982		\$ (91,996)	115%
<b>Projected Revenue:</b>						
Contributions	258,200	258,200	55,000		203,200	21%
Interest	15,000	15,000	5,782		9,218	39%
<b>Total Revenue</b>	<u>273,200</u>	<u>273,200</u>	<u>60,782</u>		<u>212,418</u>	<u>22%</u>
<b>TOTAL REVENUE/ FUNDING SOURCES</b>	<u>\$ 871,186</u>	<u>\$ 871,186</u>	<u>\$ 750,764</u>		<u>\$ 120,422</u>	<u>86%</u>
<b>APPROPRIATIONS</b>						
<b>Operating Costs:</b>						
<b>Services and Supplies</b>						
Professional and Specialized Services	749,258	749,258	\$ 356,769	\$ 362,710	\$ 29,779	96%
Equipment Maintenance	-	-	-	-	-	0%
Auditing Services	-	-	-	-	-	0%
Insurance	-	-	-	-	-	0%
Special Agency Expense	26,100	26,100	-	26,071	29	100%
<b>Total Services and Supplies</b>	<u>775,358</u>	<u>775,358</u>	<u>356,769</u>	<u>388,781</u>	<u>29,808</u>	<u>96%</u>
<b>Equipment</b>						
Computer Equipment	-	-	-	-	-	0%
Office Furniture & Equipment	-	-	-	-	-	0%
<b>Total Equipment</b>	<u>-</u>	<u>-</u>	<u>-</u>	<u>-</u>	<u>-</u>	<u>0%</u>
<b>Total Operating Costs</b>	<u>775,358</u>	<u>775,358</u>	<u>356,769</u>	<u>388,781</u>	<u>29,808</u>	<u>96%</u>
<b>TOTAL APPROPRIATIONS</b>	<u>\$ 775,358</u>	<u>\$ 775,358</u>	<u>\$ 356,769</u>	<u>\$ 388,781</u>	<u>\$ 29,808</u>	<u>96%</u>
<b>Ending Fund Balance</b>	\$ 95,828	\$ 95,828	\$ 393,995			
<b>Reserve for Future Audits and Administrative Expenditures</b>	-	-	-	-	-	0%
<b>Ending Unreserved Fund Balance</b>	<u>\$ 95,828</u>	<u>\$ 95,828</u>	<u>\$ 393,995</u>			



**PM Study Fund**  
**Financial Report**  
For the Period Ending May 31, 2013

<b>Cash Balance at 4/30/13</b>		<b>\$ 401,316.90</b>
Plus:	Revenue deposited during month:	
	Interest	-
	Contributions	-
	Total Interest and Contributions	-
Less:	Expenditures paid during month:	
	Contracts	(7,321.52)
	Total Expenditures	(7,321.52)
<b>Cash Balance at 5/31/13</b>		<b>\$ 393,995.38</b>
Plus:	Binding Commitments	
	CDFA Agreement No. 09-0829	82,504.10
Less:	Outstanding Encumbrances	(388,780.95)
<b>CASH AND COMMITMENTS AVAILABLE AT 5/31/13</b>		<b>\$ 87,718.53</b>

# PM Study Fund Financial Recap

From Inception Through the Period Ending May 31, 2013

## REVENUES:

Contributions	\$ 23,314,075.16
Interest Allocated	3,577,363.40
EPA 105 interest payments	(858,922.93)
Total Revenues to Date	<u>\$ 26,032,515.63</u>

## EXPENDITURES:

Contract Expenditures	\$ 25,561,414.92
Insurance	18,480.00
Software license	9,681.35
Transfer funds to SJVUAPCD	48,471.49
Other Expenditures	472.49
Total Expenditures to Date	<u>\$ 25,638,520.25</u>

Cash Balance at Month End	<u><u>\$ 393,995.38</u></u>
---------------------------	-----------------------------

**PM Study Fund**  
**Expenditure Summary by Contract**  
For the Period Ending May 31, 2013

<u>Contract Number/Name</u>		<u>Total Invoice</u>	<u>10% Retention</u>	<u>Amount Paid</u>	<u>Encumbrances</u>	<u>Outstanding Encumbrances</u>
<b>Summary of Outstanding Encumbrances:</b>						
00-5	The Regents of the University of California	\$ 1,250,541.89	\$ (74,465.51)	\$ 1,176,076.38	\$ 1,260,973.00	\$ 84,896.62
09-1	US Dept of Agriculture, AG Research Service	81,000.00	(8,100.00)	72,900.00	81,000.00	8,100.00
09-2	The Regents of the Univ of Ca at Los Angeles	212,908.19	(21,290.82)	191,617.37	250,000.00	58,382.63
11-1	Texas A&M University, Texas Agrilife Research	33,782.60		33,782.60	37,500.00	3,717.40
11-2	Winegar Air Sciences	192,902.22	(12,164.78)	180,737.44	222,200.00	41,462.56
11-22	Science Applications International Corporation	162,760.21	(16,276.03)	146,484.18	249,887.00	103,402.82
12-1	UC Regents - Lawrence Berkeley National Lab	57,251.92		57,251.92	100,000.00	42,748.08
13-1	California State University, Fresno Publications and Symposium	11,929.16		11,929.16	20,000.00	20,000.00
					38,000.00	26,070.84
Subtotals - Outstanding Encumbrances		\$ 2,003,076.19	\$ (132,297.14)	\$ 1,870,779.05	\$ 2,259,560.00	\$ 388,780.95
<b>Summary of Closed Contracts:</b>						
92-1	Phillip Roth	1,057,956.64		1,057,956.64	1,057,956.64	
93-2	Alpine Geophysics	545,954.29		545,954.29	545,954.29	
94-1	Sonoma Technology, Inc.	199,895.17		199,895.17	199,895.17	
95-1	Sonoma Technology, Inc.	388,781.08		388,781.08	388,781.08	
95-2	Sonoma Technology, Inc.	423,058.18		423,058.18	423,058.18	
95-3	John Ondov	14,230.00		14,230.00	14,230.00	
95-4	Florida International University	14,541.37		14,541.37	14,541.37	
95-6	Desert Research Institute	11,164.76		11,164.76	11,164.76	
95-7	ICF Kaiser Systems Applications Int.	305,613.07		305,613.07	305,613.07	
95-8	Desert Research Institute	915,843.00		915,843.00	915,843.00	
95-9	Sonoma Technology, Inc.	476,448.78		476,448.78	476,448.78	
95-10	Sonoma Technology, Inc.	134,995.98		134,995.98	134,995.98	
95-11	Sonoma Technology, Inc.	249,999.99		249,999.99	249,999.99	
95-12	Aerovironment, Inc.	101,861.84		101,861.84	101,861.84	
96-1	Dr. Spyros Pandis	5,000.00		5,000.00	5,000.00	
97-1	Dr. Charles Blanchard	59,853.03		59,853.03	59,853.03	
97-2	Regents of the UC, Riverside	19,442.01		19,442.01	19,442.01	
97-3	Technical & Business Systems, Inc.	48,450.00		48,450.00	48,450.00	
97-4	Sonoma Technology, Inc.	222,870.00		222,870.00	222,870.00	
97-5	ICF Kaiser, Systems Application, Inc.	39,927.84		39,927.84	39,927.84	
97-6	California Institute of Technology	35,215.60		35,215.60	35,215.60	
97-7	ENSR Consulting and Engineering	55,359.72		55,359.72	55,359.72	
97-8	Philip M. Roth	10,325.90		10,325.90	10,325.90	
98-1	RJ Lee Group	150,000.00		150,000.00	150,000.00	
98-2	ENSR Consulting and Engineering	1,744,217.00		1,744,217.00	1,744,217.00	
98-3	Florida International University	49,208.79		49,208.79	49,208.79	
98-4	Board of Regents & Community College	54,000.00		54,000.00	54,000.00	
98-5	The Regents of the University of California	50,007.00		50,007.00	50,007.00	
98-6	AVES, an Affiliate of ATC Associates, Inc.	139,548.50		139,548.50	139,548.50	
98-7	Ag. Research Service, U.S. Dept of Ag.	50,000.00		50,000.00	50,000.00	
98-9	Brd of Regents & Comm. College of Nevada	14,997.65		14,997.65	14,997.65	
99-1	Brd of Regents & Comm. College of Nevada	2,110,478.01		2,110,478.01	2,110,478.01	
99-2	Sonoma Technology, Inc.	3,213,972.28		3,213,972.28	3,213,972.28	
99-4	National Oceanic and Atmospheric Admin	1,714,800.00		1,714,800.00	1,714,800.00	
99-3	Technical & Business Systems, Inc.	1,418,525.79		1,418,525.79	1,418,525.79	
99-5	Rohn Industries, Inc.	294,955.00		294,955.00	294,955.00	
99-6	Oregon Health and Science University	233,137.00		233,137.00	233,137.00	
99-7	Brd of Regents & Comm. College of Nevada	511,803.14		511,803.14	511,803.14	
99-8	Sonoma Technology, Inc.	299,060.99		299,060.99	299,060.99	
99-9	The Regents of the UC, Riverside	349,098.32		349,098.32	349,098.32	
99-10	Brd of Regents & Comm. College of Nevada	80,568.00		80,568.00	80,568.00	
99-11	Technical & Business Systems, Inc.	38,388.00		38,388.00	38,388.00	
99-12	Parsons Engineering Science	224,468.11		224,468.11	224,468.11	
99-13	Northwest Research Associates	17,188.08		17,188.08	17,188.08	
00-2	Capital Dataworks	470,137.68		470,137.68	470,137.68	
00-4	The Regents of the UC, Davis	599,998.62		599,998.62	599,998.62	
00-6	Colorado State University	370,066.00		370,066.00	370,066.00	
00-7	ENVIRON International Corporation	95,613.76		95,613.76	95,613.76	
00-8	The Regents of the University of California	46,750.00		46,750.00	46,750.00	
00-9	The Regents of the University of Ca, Riverside	106,783.00		106,783.00	106,783.00	
02-1	Tracer Env. Science & Technologies, Inc.	58,829.74		58,829.74	58,829.74	
02-2	Aerosol Dynamics, Inc.	66,682.00		66,682.00	66,682.00	
02-3	Atmospheric and Env. Research, Inc.	24,416.00		24,416.00	24,416.00	
02-4	ENSR International	73,556.72		73,556.72	73,556.72	
02-5	Sonoma Technology, Inc.	568,747.99		568,747.99	568,747.99	
02-6	Technical & Business Systems, Inc.	112,570.00		112,570.00	112,570.00	
02-7	The Regents of the University of California	37,078.00		37,078.00	37,078.00	
04-1	Steven D. Reynolds					
04-2	Sonoma Technology, Inc.	124,948.00	(12,494.83)	112,453.17	112,453.17	
04-3	Atmospheric and Env. Research, Inc.	174,138.00		174,138.00	174,138.00	
11-3	Transystems Corporation	65,962.97		65,962.97	65,962.97	
11-4	Providence Engineering Group, LLC	170,372.06		170,372.06	170,372.06	
11-10	Desert Research Institute, NSHE	99,999.00		99,999.00	99,999.00	
	97 McGuinness & Williams	76,961.40		76,961.40	76,961.40	
	98 McGuinness & Williams	75,293.75		75,293.75	75,293.75	
	99 McGuinness & Williams	60,005.41		60,005.41	60,005.41	
	Winter Methods Evaluation Study	31,249.01		31,249.01	31,249.01	
	Workshop Expenses (Airborne PM)	20,522.98		20,522.98	20,522.98	
	Deloitte & Touche, LLP	20,700.00		20,700.00	20,700.00	
	White Ranch Land Company, LLC	25,000.00		25,000.00	25,000.00	
	CalAve Partners	27,667.18		27,667.18	27,667.18	
	Emergency Purchases for CRPMAQS	50,874.00		50,874.00	50,874.00	
	AAAR Symposium funding from PM Study	5,000.00		5,000.00	5,000.00	
	Brown and Armstrong, CPA's	31,795.00		31,795.00	31,795.00	
	ARB Computer Equipment	478,437.78		478,437.78	478,437.78	
	Sites, Leases and Equipment for CRPMAQS	1,437,764.74		1,437,764.74	1,437,764.74	
Subtotals - Closed Contracts		\$ 23,703,130.70	\$ (12,494.83)	\$ 23,690,635.87	\$ 23,690,635.87	\$ -
<b>Totals - PM Study Fund</b>		<b>\$ 25,706,206.89</b>	<b>\$ (144,791.97)</b>	<b>\$ 25,561,414.92</b>	<b>\$ 25,950,195.87</b>	<b>\$ 388,780.95</b>

**SAN JOAQUIN VALLEY WIDE AIR POLLUTION STUDY AGENCY  
BUDGET STATUS REPORT - FISCAL YEAR 2012/13**

**CCOS FUND**

Month Ending May 31, 2013  
(92% of the Year Completed)

	Adopted	Adjusted	Actuals	Encumbrances	(Over) /Under	% Collected /Used
<b>REVENUE / FUNDING SOURCES</b>						
<b>Fund Balance Available</b>	\$ 795,426	\$ 795,426	\$ 1,125,438		\$ (330,012)	141%
<b>Projected Revenue:</b>						
Contributions	1,343,165	1,343,165	687,232		655,933	51%
Interest	20,000	20,000	7,144		12,856	36%
<b>Total Revenue</b>	<u>1,363,165</u>	<u>1,363,165</u>	<u>694,376</u>		<u>668,789</u>	<u>51%</u>
<b>TOTAL REVENUE/ FUNDING SOURCES</b>	<u>\$ 2,158,591</u>	<u>\$ 2,158,591</u>	<u>\$ 1,819,814</u>		<u>\$ 338,777</u>	<u>84%</u>
<b>APPROPRIATIONS</b>						
<b>Operating Costs:</b>						
<b>Services and Supplies</b>						
Professional and Specialized Services	\$ 1,420,926	\$ 1,420,926	\$ 884,828	\$ 101,047	\$ 435,051	69%
Equipment Maintenance	39,000	39,000	-	38,836	164	100%
Auditing Services	14,500	14,500	6,975	7,414	111	99%
Insurance	5,000	5,000	-	-	5,000	0%
Special Agency Expense	-	-	-	-	-	0%
<b>Total Services and Supplies</b>	<u>1,479,426</u>	<u>1,479,426</u>	<u>891,803</u>	<u>147,297</u>	<u>440,326</u>	<u>70%</u>
<b>Equipment</b>						
Computer Equipment	458,603	488,603	479,621	8,982	-	100%
Office Furniture & Equipment	130,000	135,000	134,797	203	-	100%
<b>Total Equipment</b>	<u>588,603</u>	<u>623,603</u>	<u>614,418</u>	<u>9,185</u>	<u>-</u>	<u>100%</u>
<b>Total Operating Costs</b>	2,068,029	2,103,029	1,506,221	156,482	440,326	79%
<b>TOTAL APPROPRIATIONS</b>	<u>\$ 2,068,029</u>	<u>\$ 2,103,029</u>	<u>\$ 1,506,221</u>	<u>\$ 156,482</u>	<u>\$ 440,326</u>	<u>79%</u>
<b>Ending Fund Balance</b>	\$ 90,562	\$ 55,562	\$ 313,593			
<b>Reserve for Future Audits and Administrative Expenditures</b>	50,000	50,000	-	-	-	0%
<b>Ending Unreserved Fund Balance</b>	<u>\$ 40,562</u>	<u>\$ 5,562</u>	<u>\$ 313,593</u>			

**CCOS Fund**  
**Financial Report**  
For the Period Ending May 31, 2013

<b>Cash Balance at 4/30/13</b>		<b>\$ 313,593.65</b>
Plus:	Revenue deposited during month	
	Interest	-
	Contributions	-
	Total Interest and Contributions	-
Less:	Expenditures paid during month:	
	Contracts	-
	Total Expenditures	-
<b>Cash Balance at 5/31/13</b>		<b>\$ 313,593.65</b>
Plus:	Binding Commitments	-
Less:	Sales Tax Payable to CA BOE	(1,870.27)
Less:	Outstanding Encumbrances	(156,481.59)
<b>CASH AND COMMITMENTS AVAILABLE AT 5/31/13</b>		<b>\$ 155,241.79</b>

**CCOS Fund**  
**Financial Recap**  
From Inception Through the Period Ending May 31, 2013

**REVENUES:**

Contributions *	\$ 15,409,884.84
Interest Allocated	1,128,424.47
Total Revenues to Date	<u>16,538,309.31</u>

**EXPENDITURES:**

Contract Expenditures	15,892,715.66
Transfer to PM Study	332,000.00
Total Expenditures to Date	<u>16,224,715.66</u>

<b>Cash Balance at Month End</b>	<u><u>\$ 313,593.65</u></u>
----------------------------------	-----------------------------

**Schedule of Contributors**

<u>Contributors</u>	<u>Amount</u>
Alameda County Waste Management Authority	\$ 15,000.00
Bay Area Air Quality Management District	1,245,000.00
California Air Resources Board	6,364,800.00
California Apple Commission	500.00
California Cotton Ginners And Growers Association	4,000.00
California Department of Food & Agriculture	60,744.26
California Energy Commission (through ARB)	2,573,864.00
California Farm Bureau Federation	15,500.00
California Grape & Tree Fruit League	500.00
California Independent Petroleum Association	1,000.00
Community Alliance for Responsible Env. Stewardship	142,524.00
County of San Luis Obispo	16,000.00
Environmental Protection Agency (through ARB)	1,378,000.00
Greater Madera County Industrial Association	1,000.00
Guardian Industries Corporation	1,000.00
GWF Energy LLC	5,000.00
Insight Environmental Consultants	1,000.00
Kern County Farm Bureau	500.00
Kern Oil & Refining Company	1,000.00
Mendocino County Air Quality Management District	30,000.00
Merced County Regional Waste Management Authority	5,000.00
Miscellaneous Refunds	83.38
Nisei Farmers League	16,200.00
Sacramento Metropolitan Air Quality Management District	229,833.00
San Joaquin Valley Unified Air Pollution Control District	2,181,081.00
San Luis Obispo County Air Pollution Control District	30,000.00
Southern California Gas Company	5,000.00
Transfer from SARMAP Fund	660,755.20
- Pacific Gas and Electric Company Share - \$ 266,905.11	
- Electric Power Research Institute Share - \$ 168,492.59	
Western States Petroleum Association	415,000.00
Yolo-Solano Air Quality Management District	10,000.00
Total Contributions	<u><u>\$ 15,409,884.84</u></u>

**CCOS Fund**  
**Expenditure Summary by Contract**  
For the Period Ending May 31, 2013

<u>Contract Number/Name</u>		<u>Total Invoice</u>	<u>10% Retention</u>	<u>Amount Paid</u>	<u>Encumbrances</u>	<u>Outstanding Encumbrances</u>
<b>Summary of Outstanding Encumbrances:</b>						
04-5	Steven D. Reynolds	241,680.73		241,680.73	252,425.00	10,744.27
10-2	Steven D. Reynolds	260,337.54		260,337.54	312,500.00	52,162.46
11-2	Sierra Research, Inc.	332,158.40	(33,215.81)	298,942.59	337,083.00	38,140.41
	Computer Equipment Purchases	521,018.24		521,018.24	530,000.00	8,981.76
	Equipment Account	1,413,163.98		1,413,163.98	1,452,000.00	38,836.02
	Facilities & Equipment	134,797.20		134,797.20	135,000.00	202.80
	PEER Review Account	57,586.13		57,586.13	65,000.00	7,413.87
Subtotals - Outstanding Encumbrances		\$ 2,960,742.22	\$ (33,215.81)	\$ 2,927,526.41	\$ 3,084,008.00	\$ 156,481.59
<b>Summary of Closed Contracts:</b>						
99-2	Philip M. Roth	\$ 49,163.15		\$ 49,163.15	\$ 49,163.15	
00-1	National Oceanic and Atmospheric Admin	564,147.03		564,147.03	564,147.03	
00-2	National Oceanic and Atmospheric Admin	122,592.34		122,592.34	122,592.34	
00-3	Sonoma Technology, Inc.	425,000.00		425,000.00	425,000.00	
00-4	Technical & Business Systems, Inc.	195,092.79		195,092.79	195,092.79	
00-5	Sonoma Technology, Inc.	483,149.99		483,149.99	483,149.99	
00-6	The Regents of the UC, Riverside	288,000.00		288,000.00	288,000.00	
00-7	Biospherics Research Corporation	266,783.25		266,783.25	266,783.25	
00-8	ENSR Consulting and Engineering, Inc.	256,658.55		256,658.55	256,658.55	
00-9	Brd of Regents & Comm. College of NV, DRI	419,187.00		419,187.00	419,187.00	
00-10	Brd of Regents & Comm. College of NV, DRI	323,517.48		323,517.48	323,517.48	
00-11	Brd of Regents & Comm. College of NV, DRI	600,747.45		600,747.45	600,747.45	
00-12	Technical & Business Systems, Inc.	77,438.13		77,438.13	77,438.13	
00-13	The Regents of the UC, Riverside	62,916.00		62,916.00	62,916.00	
00-14	The Regents of the UC, Berkeley	127,000.00		127,000.00	127,000.00	
00-15	Pacific Gas & Electric	19,800.00		19,800.00	19,800.00	
00-16	The Regents of the University of California	80,000.00		80,000.00	80,000.00	
00-17	Tennessee Valley Authority	253,279.83		253,279.83	253,279.83	
00-18	Atmospheric & Environmental Research, Inc.	19,800.00		19,800.00	19,800.00	
00-19	Parsons Engineering Science, Inc.	199,963.70		199,963.70	199,963.70	
00-20	AlmAA, Inc.	284,695.76		284,695.76	284,695.76	
00-21	Brd of Regents & Comm. College of NV, DRI	175,857.67		175,857.67	175,857.67	
00-22	The Regents of the UC, Davis	36,491.08		36,491.08	36,491.08	
00-23	Twin Otter International	54,756.84		54,756.84	54,756.84	
00-24	Sonoma Technology, Inc.	229,833.00		229,833.00	229,833.00	
00-27	Technical & Business Systems, Inc.	254,396.75		254,396.75	254,396.75	
00-28	The Regents of the UC, Riverside	29,212.43		29,212.43	29,212.43	
00-29	Lewis Potter	750.00		750.00	750.00	
00-30	Elight Laser Systems GmbH	11,000.00		11,000.00	11,000.00	
00-31	The Regents of the UC, Davis	7,700.00		7,700.00	7,700.00	
01-1	Electric Power Research Institute	143,000.00		143,000.00	143,000.00	
01-2	Technical & Business Systems, Inc.	269,878.29		269,878.29	269,878.29	
01-3	The Regents of the University of California	122,714.27		122,714.27	122,714.27	
02-1	Atmospheric, Met. and Environmental Tech., LLC.					
02-2	The Regents of the UC, Riverside	140,000.00	(14,000.00)	126,000.00	126,000.00	
02-3	Capital Dataworks	529,293.09		529,293.09	529,293.09	
02-4	The Regents of the UC, Davis	7,938.27		7,938.27	7,938.27	
02-5	Environ International Corporation	15,000.00		15,000.00	15,000.00	
03-1	Alpine Geophysics, LLC	139,988.64		139,988.64	139,988.64	
04-1	The Regents of the UC, Berkeley	305,105.12	(6,526.37)	298,578.75	298,578.75	
04-2	Alpine Geophysics, LLC	39,989.24		39,989.24	39,989.24	
04-3	The Regents of the UC, Davis	55,995.11		55,995.11	55,995.11	
04-4	U.S. Department of Commerce, NOAA (B/19/2005)	249,392.91		249,392.91	249,392.91	
04-6	Innovative Solutions, Inc.					
05-1	Sonoma Technologies, Inc.	195,319.00		195,319.00	195,319.00	
05-2	Sonoma Technologies, Inc.	148,910.00	(14,891.00)	134,019.00	134,019.00	
05-3	Sonoma Technologies, Inc.	224,999.95		224,999.95	224,999.95	
05-4	The Georgia Tech Research Corp	276,755.53		276,755.53	276,755.53	
05-5	CE Schmidt	252,524.00		252,524.00	252,524.00	
05-6	Charles L. Blanchard	210,074.51		210,074.51	210,074.51	
06-1	The Regents of the UC, Davis	149,984.60		149,984.60	149,984.60	
06-2	Sonoma Technologies, Inc.	144,127.57		144,127.57	144,127.57	
08-1	CE Schmidt, Ph.D.	158,406.04		158,406.04	158,406.04	
09-1	San Diego University Research Foundation	198,315.77		198,315.77	198,315.77	
09-2	Technical and Business Systems, Inc.	299,846.22	(0.37)	299,845.85	299,845.85	
09-3	The Regents of the UC, Davis	120,000.00		120,000.00	120,000.00	
10-1	The University of Miami	236,922.83		236,922.83	236,922.83	
11-1	Providence Engineering Group, LLC	149,510.00	(0.01)	149,509.99	149,509.99	
11-3	URS Corporation	215,400.99		215,400.99	215,400.99	
11-4	Regents of the University of California	48,569.33		48,569.33	48,569.33	
11-6	Providence Engineering Group, LLC	99,860.00		99,860.00	99,860.00	
11-8	Charles L. Blanchard, Ph.D.	111,613.80		111,613.80	111,613.80	
11-15	Select Group, Inc.	57,120.00		57,120.00	57,120.00	
12-01	Association of Compost Producers	92,000.00		92,000.00	92,000.00	
12-02	Leva Energy, Inc.	107,951.45		107,951.45	107,951.45	
	2000 - 2007 McGuiness, Norris & Williams	576,051.75		576,051.75	576,051.75	
	2007 Stiff, Cerda & Lake	12,551.13		12,551.13	12,551.13	
	ARB funding from CCOS					
	Audit FY05 - FY08 Brown & Armstrong Accountancy	28,620.00		28,620.00	28,620.00	
	CCOS Computer Account	281,043.42		281,043.42	281,043.42	
	Macias, Gini & Company, LLP	6,258.00		6,258.00	6,258.00	
	National Aeronautics & Space Administration, NASA	93,906.00		93,906.00	93,906.00	
	Price Paige & Company Accountancy Corp	17,450.00		17,450.00	17,450.00	
	Publications and Conference Account	10,000.00		10,000.00	10,000.00	
	Publicity Event	5,289.95		5,289.95	5,289.95	
	U.S. Department of Commerce, NOAA	534,000.00		534,000.00	534,000.00	
Subtotals - Closed Contracts		\$13,000,607.00	(\$35,417.75)	\$12,965,189.25	\$12,965,189.25	\$ -
Totals - CCOS Fund		\$ 15,961,349.22	\$ (68,633.56)	\$ 15,892,715.66	\$ 16,049,197.25	\$ 156,481.59

**SAN JOAQUIN VALLEY WIDE AIR POLLUTION STUDY AGENCY  
BUDGET STATUS REPORT - FISCAL YEAR 2012/13**

**AG RESEARCH FUND**

Month Ending May 31, 2013  
(92% of the Year Completed)

	Adopted	Adjusted	Actuals	Encumbrances	(Over) /Under	% Collected /Used
<b>REVENUE / FUNDING SOURCES</b>						
<b>Fund Balance Available</b>	\$ 47,020	\$ 47,020	\$ 47,112		\$ (92)	100%
<b>Projected Revenue:</b>						
Contributions	-	-	-		-	0%
Interest	800	800	483		317	60%
<b>Total Revenue</b>	<u>800</u>	<u>800</u>	<u>483</u>		<u>317</u>	<u>60%</u>
<b>TOTAL REVENUE/ FUNDING SOURCES</b>	<u>\$ 47,820</u>	<u>\$ 47,820</u>	<u>\$ 47,595</u>		<u>\$ 225</u>	<u>100%</u>
<b>APPROPRIATIONS</b>						
<b>Operating Costs:</b>						
<b>Services and Supplies</b>						
Professional and Specialized Services	14,140	14,140	\$ -	\$ 14,139	\$ 1	100%
Equipment Maintenance	-	-	-	-	-	0%
Auditing Services	-	-	-	-	-	0%
Insurance	-	-	-	-	-	0%
Special Agency Expense	-	-	-	-	-	0%
<b>Total Services and Supplies</b>	<u>14,140</u>	<u>14,140</u>	<u>-</u>	<u>14,139</u>	<u>1</u>	<u>100%</u>
<b>Equipment</b>						
Computer Equipment	-	-	-	-	-	0%
Office Furniture & Equipment	-	-	-	-	-	0%
<b>Total Equipment</b>	<u>-</u>	<u>-</u>	<u>-</u>	<u>-</u>	<u>-</u>	<u>0%</u>
<b>Total Operating Costs</b>	14,140	14,140	-	14,139	1	100%
<b>TOTAL APPROPRIATIONS</b>	<u>\$ 14,140</u>	<u>\$ 14,140</u>	<u>\$ -</u>	<u>\$ 14,139</u>	<u>\$ 1</u>	<u>100%</u>
<b>Ending Fund Balance</b>	\$ 33,680	\$ 33,680	\$ 47,595			
<b>Reserve for Future Audits and Administrative Expenditures</b>	-	-	-	-	-	0%
<b>Ending Unreserved Fund Balance</b>	<u>\$ 33,680</u>	<u>\$ 33,680</u>	<u>\$ 47,595</u>			



# Agricultural Research Fund

## Financial Report

For the Period Ending May 31, 2013

<b>Cash Balance at 4/30/13</b>		<b>\$</b>	<b>47,595.10</b>
Plus:	Revenue deposited during month		
	Interest	-	
	Contributions	-	
	Total Interest and Contributions	-	
Less:	Expenditures paid during month:		
	Contracts	-	
	Total Expenditures	-	
<b>Cash Balance at 5/31/13</b>		<b>\$</b>	<b>47,595.10</b>
Plus:	Binding Commitments		-
Less:	Outstanding Encumbrances		(14,139.16)
<b>CASH AND COMMITMENTS AVAILABLE AT 5/31/13</b>		<b>\$</b>	<b>33,455.94</b>

**Agricultural Research Fund**  
**Financial Recap**  
From Inception Through the Period Ending May 31, 2013

**REVENUES:**

Contributions	\$ 323,600.00
Interest Allocated	23,349.85
Total Revenues to Date	<u>346,949.85</u>

**EXPENDITURES:**

Contract Expenditures	299,354.75
Total Expenditures to Date	<u>299,354.75</u>

<b>Cash Balance at Month End</b>	<u><u>\$ 47,595.10</u></u>
----------------------------------	----------------------------

**Schedule of Contributors**

<u>Contributors</u>	<u>Amount</u>
San Joaquin Valley Unified Air Pollution Control District	\$ 250,000.00
California Department of Food & Agriculture	73,600.00

Total Contributions	<u><u>\$ 323,600.00</u></u>
---------------------	-----------------------------

**Agricultural Research Fund**  
**Expenditure Summary by Contract**  
For the Period Ending May 31, 2013

<u>Contract Number/Name</u>	<u>Total Invoice</u>	<u>10% Retention</u>	<u>Amount Paid</u>	<u>Encumbrances</u>	<u>Outstanding Encumbrances</u>
<b>Summary of Outstanding Encumbrances:</b>					
07-1 Utah State University Research Foundation	\$ 95,287.59	\$ (9,528.75)	\$ 85,758.84	\$ 99,898.00	\$ 14,139.16
<hr/>					
Subtotals - Outstanding Encumbrances	\$ 95,287.59	\$ (9,528.75)	\$ 85,758.84	\$ 99,898.00	\$ 14,139.16
<b>Summary of Closed Contracts:</b>					
04-1 CE Schmidt, PH.D.	\$ 49,995.91		\$ 49,995.91	\$ 49,995.91	
08-2 CE Schmidt, PH.D.	80,000.00		80,000.00	80,000.00	
09-1 CE Schmidt, PH.D.	73,600.00		73,600.00	73,600.00	
11-1 California Cattlemen's Association (CCA)	10,000.00		10,000.00	10,000.00	
<hr/>					
Subtotals - Closed Contracts	\$ 213,595.91	\$ -	\$ 213,595.91	\$ 213,595.91	\$ -
<hr/>					
Totals - AG Research Fund	\$ 308,883.50	\$ (9,528.75)	\$ 299,354.75	\$ 313,493.91	\$ 14,139.16